



MICROSOFT[®] EXCHANGE WITH EQUALLOGIC[®]

"We rely on the EqualLogic SAN to support Exchange Server and database services for more than 1,300 staff and student users. When we were evaluating various SANs, including Fibre Channel offerings, we required not only great performance for our Microsoft applications, but also the ability to protect our data with advanced disaster recovery options. EqualLogic met these needs and didn't require us to send staff to expensive training courses to learn how to use their products. We were up and running in minutes."

*– Hoover City Schools,
Chief Technology Officer,
Keith Price*

EqualLogic is Microsoft WHQL qualified.



In the past decade electronic messaging and more specifically, e-mails, have become the backbone of communication and collaboration within and between organizations, with Microsoft Exchange being by far the most deployed messaging environment in the corporate market place. This dependency on e-mail communication within the business community make it essential to have highly available and high performance Exchange environments that can not only maintain and ensure business continuity but also provide fast and instantaneous recovery in the case of a disaster.

IDEAL PLATFORM FOR MICROSOFT EXCHANGE

Together, EqualLogic PS Series storage arrays and Microsoft Exchange provide the reliable messaging environment you need. The results of the Microsoft Exchange Solution Reviewed Program clearly identify EqualLogic as the platform of choice for Exchange environments; by serving the highest number of user per disk space and providing the best performance rating in its class, the PS Series is the storage array of choice for Exchange users.

- **Optimized Performance**

The PS Series was designed with virtualization and automatic load balancing across all available storage resources. As your Exchange deployment grows, PS Series arrays automatically harness the aggregate resources to evenly load balance data requests, additional capacity, network activity, and cache. Performance improves linearly as you scale – this sharply contrasts with traditional storage architectures that force mailboxes to go offline and performance to decrease when adding capacity.

- **Enterprise Data Servicing**

PS Series arrays have intelligence designed in and enterprise data services already included. With PS Series arrays, you can consolidate your messaging data for better operations with improved provisioning and control. Automated intelligence and centralized management offer simpler, lower cost operation. PS Series arrays also offer the highest class of information protection. Fully redundant, hot serviceable components provide total data protection, while PS Series auto-replication and snapshots, integrated with Microsoft Windows Volume Shadow Copy Service (VSS), deliver online backups, instant restore, and straight forward disaster recovery.

- Tiering and Pooling

The PS Series is not just designed to meet your Exchange needs, but is also the ideal SAN to consolidate all of your server and storage resources. With PS Series tiering and pooling capabilities, you can maximize your Exchange performance with higher performing drives and RAID sets – and also cost effectively store less performance-critical data on drives and RAID sets designed for capacity utilization. Even better, all your storage resources are managed through a single, easy-to-use interface.

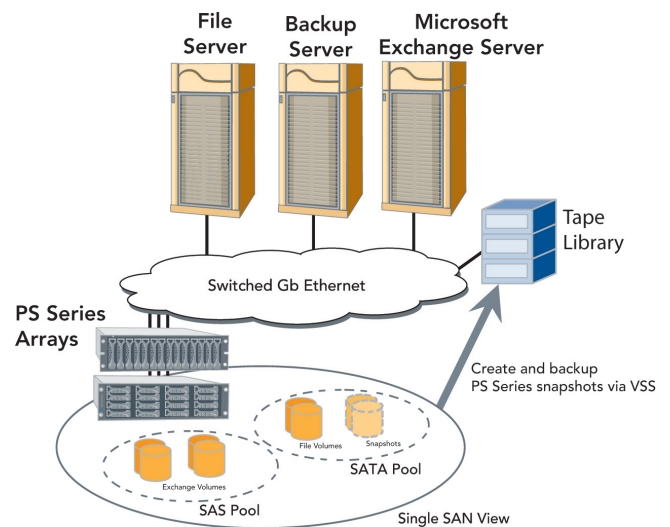
EFFICIENT BACKUP AND RECOVERY

Backup is a major challenge in growing Exchange environments, as users want larger mailboxes and regulations require longer retention with easy access. Plus, since the pressures of growth force users to delete e-mail more often, restore requests are a daily task. PS Series arrays integrate with best-of-breed backup applications, letting you backup Exchange data to disk quickly and restore Exchange data down to the mailbox and message level.

PS Series snapshots provide online backups without downtime. For Windows Server™ 2003 deployments, PS Series arrays are seamlessly integrated with VSS which takes advantage of PS Series snapshot technology to improve backup and recovery, reduce staff intervention in the backup process, and offload data movement from application servers. VSS works with the PS Series array (VSS "hardware provider"), backup application (VSS "requestor") and Exchange (VSS "writer") to coordinate a real-time, application-aware, consistent backup of your Exchange data. IT staff are released from trying to manually integrate the components, Exchange servers are relieved of the backup processing burden, and data are stored in application-consistent format for faster, easier, and more reliable restores.

As well as being a Microsoft VSS Hardware Provider, the PS Series is Microsoft WHQL qualified. This industry distinction bestows the "Designed for Windows" logo, and is offered only to tested products that deliver a high-quality computing experience with Windows operating systems.

PS Series arrays provide a consolidated Exchange storage environment that is easy to deploy and operate. Growth can be handled on demand and online, easing administrator burdens and improving data availability and performance.



- EqualLogic offers the highest performance mid-range storage array for Microsoft Exchange.
- PS Series arrays serve the highest number of Microsoft Exchange users per disk space.
- Achieve the highest level of data protection through continuous backup and replication features provided by EqualLogic.



9 Townsend West, Nashua, NH 03063
Tel 603.579.9762 / Fax 603.579.6910 / www.equallogic.com